



SWEETWATER CREEK

LOGISTICS CENTER

| 4Q 2021 COMPLETION |

280,140 SF

AVAILABLE FOR LEASE



LOCATION



4.9 Miles
Fed Ex



10.5 Miles
UPS Smart Hub



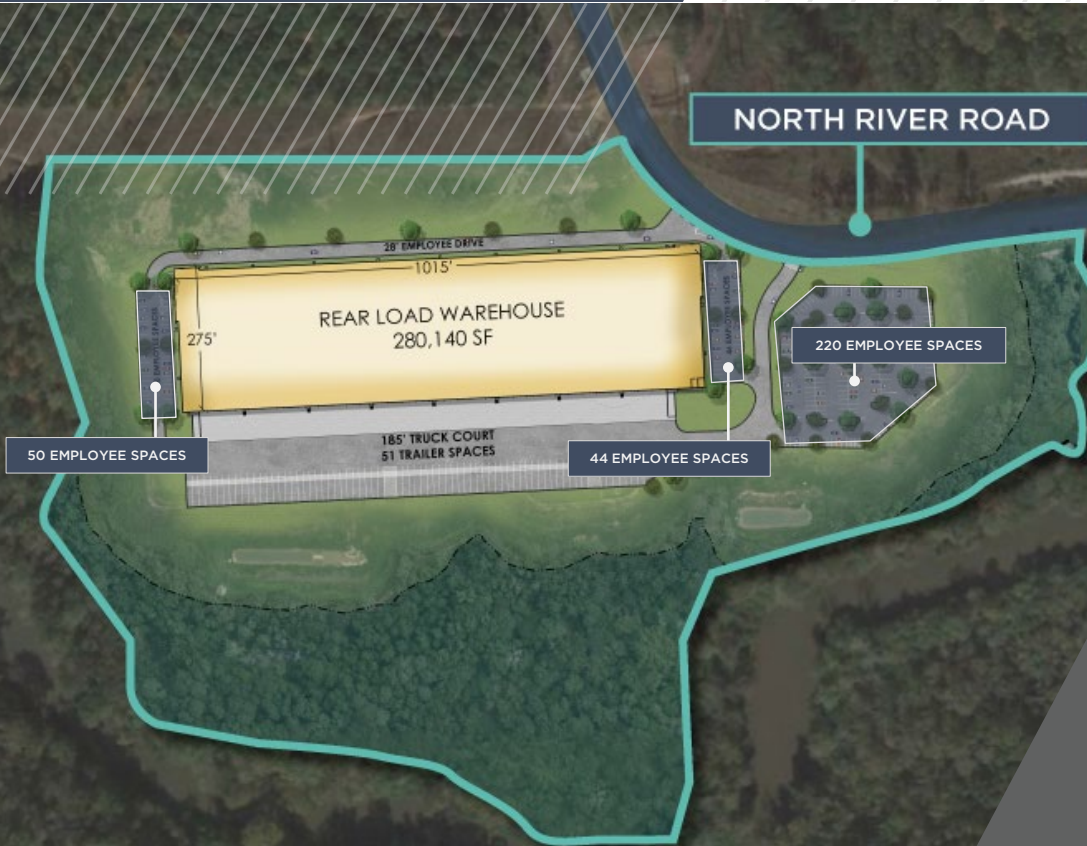
5 Miles
I-20 (via Thornton Road)



17 Miles
International Airport



AVAILABLE FOR LEASE



PROPERTY HIGHLIGHTS



280,140 SF



36' Clear Ceiling Height



185' Truck Court



51 Trailer Spaces



316 Employee Spaces

Ryan Bellows

+1 404 460 8296

ryan.bellows@cushwake.com

Lisa Pittman

+1 404 853 5277

lisa.pittman@cushwake.com

Ray Stache, SIOR

+1 404 853 5313

ray.stache@cushwake.com

Frank Fallon

+1 678 256 3177

ffallon@chindustrial.com

**CROW
HOLDINGS**
INDUSTRIAL

**CUSHMAN &
WAKEFIELD**

©2021 Cushman & Wakefield. All rights reserved. The material in this presentation has been prepared solely for information purposes, and is strictly confidential. Any disclosure, use, copying or circulation of this presentation (or the information contained within it) is strictly prohibited, unless you have obtained Cushman & Wakefield's prior written consent. The views expressed in this presentation are the views of the author and do not necessarily reflect the views of Cushman & Wakefield. Neither this presentation nor any part of it shall form the basis of, or be relied upon in connection with any offer, or act as an inducement to enter into any contract or commitment whatsoever. NO REPRESENTATION OR WARRANTY IS GIVEN, EXPRESS OR IMPLIED, AS TO THE ACCURACY OF THE INFORMATION CONTAINED WITHIN THIS PRESENTATION, AND CUSHMAN & WAKEFIELD IS UNDER NO OBLIGATION TO SUBSEQUENTLY CORRECT IT IN THE EVENT OF ERRORS.